

Highway 319 Regional Business Park Fitzgerald, GA



INFRASTRUCTURE

- ⇒ 12" water line (ESFR compliant)
- ⇒ 8" municipal sewer w/ new pump station
- ⇒ 4" high-pressure natural gas line
- ⇒ 100,000 LB rated interior road
- ⇒ 3 phase electric

TRACTS

- ⇒ Offering 2 to 35 acres
- ⇒ 60 acre Phase II in 2020

LOCATION

- Highway 319, Fitzgerald, GA
- ⇒ 22 miles to Interstate 75
- ⇒ 150 miles to Port of Savannah
- ⇒ 150 miles to Hartsfield Jackson (Atl.)
- ⇒ 180 miles to Jacksonville, FL

LABOR SHED (workforce development area)

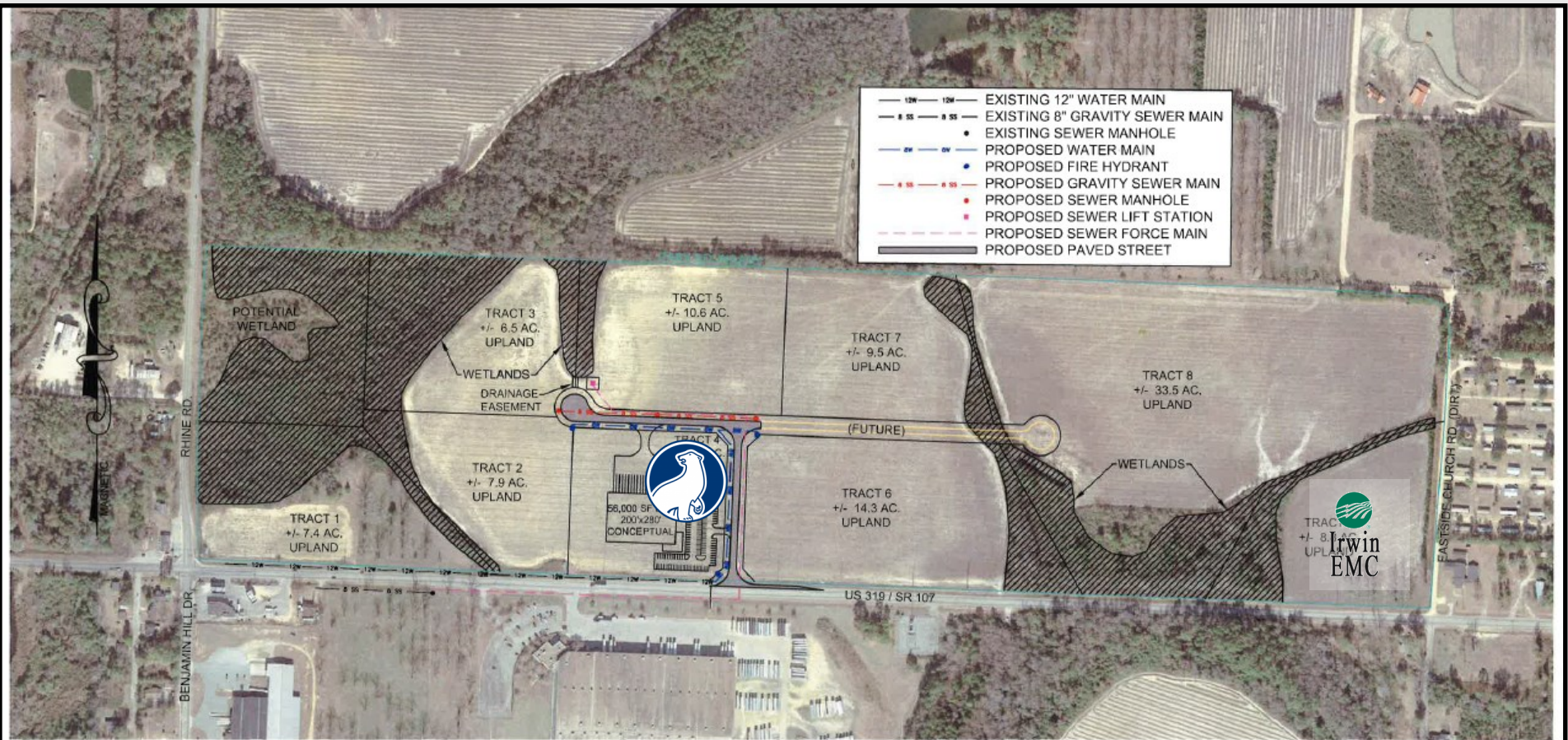
- ⇒ Population: 410,000
- ⇒ Employees: 140,990
- ⇒ Unemployment: 4%
- ⇒ Manufacturing Employees: 15,000 +/-



For Development Inquiries:

Jason Dunn - 229-349-5476 - jasondunn@fbcda.net - developfitzgeraldbenhill.com

Highway 319 Regional Business Park Fitzgerald, GA



**PHASE #1 - OPTION #2
FITZGERALD - BEN HILL DEV. AUTH.
ONE GEORGIA APPLICATION
FITZGERALD, GA**



**STATEWIDE ENGINEERING, INC.
ENGINEERS - SURVEYORS - PLANNERS**
516 EAST ASHLEY STREET DOUGLAS, GEORGIA (912) 384-7723

CADD FILE: S:\17-3149\Application\PHASED APP MAIN.dwg

DRAWN BY: T.W.G.
DATE: 4/15/17
JOB NUMBER: 17-3149
THESE DRAWINGS ARE THE PROPERTY OF
STATEWIDE ENGINEERING, INC.
AND ARE NOT TO BE REPRODUCED OR
USED IN ANY MANNER WITHOUT PERMISSION AND CREDIT.

**SHEET
C-3**

PLOT DATE: 5/8/17



developfitzgeraldbenhill.com



Highway 319 Regional Business Park

